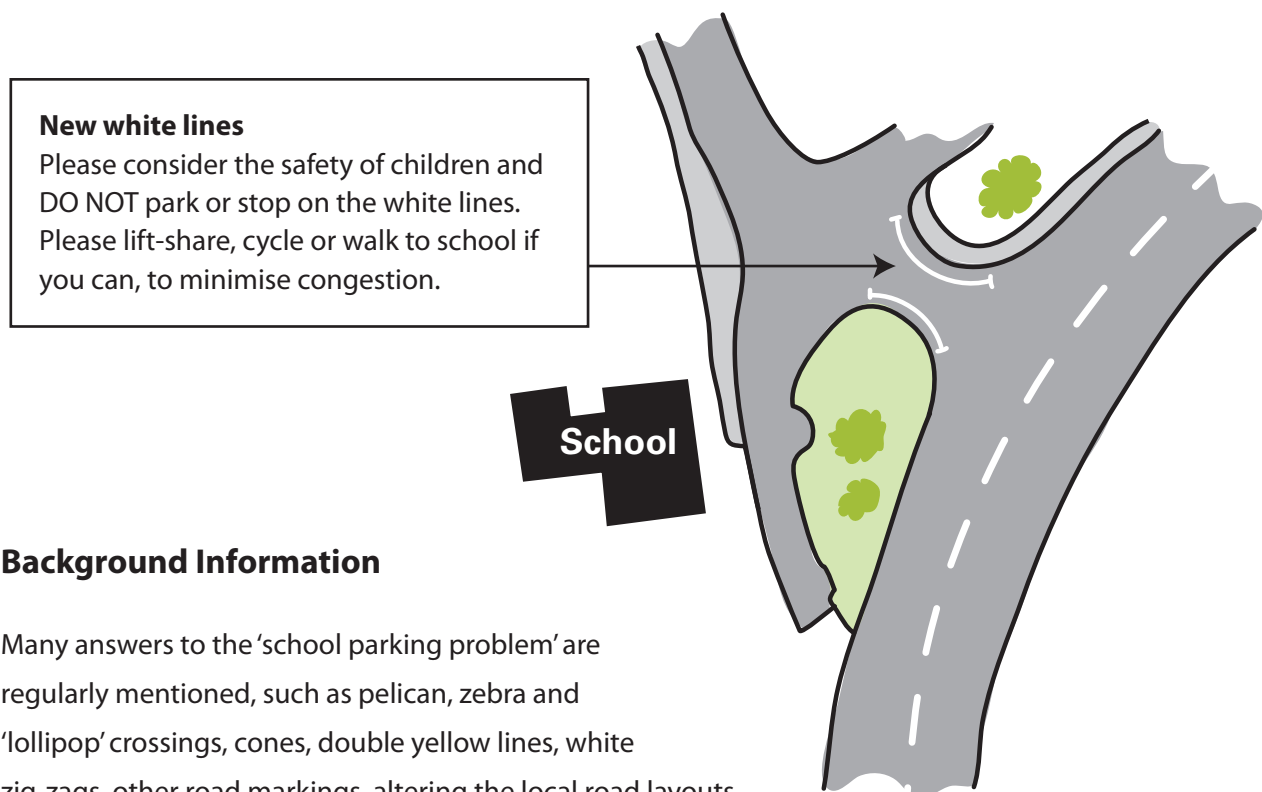


A Safer Crossing Point at the School

At a recent St Briavels Parish Council meeting with Gloucestershire County Council Highways the subject of child safety whilst crossing the road near the school was again discussed. This is after many years of meetings including the school, parents and local householders.

Over half term GCC Highways will paint white H lines on the two sides of the road near the B4228 junction where children and parents habitually cross the road (see map below). **These markings are intended to deter everyone from parking there**, especially during pick-up and drop-off times. This is to create a clear window for people to cross the road where there are no visual obstacles i.e. parked or stopped vehicles. Therefore, small children will not have to emerge from between parked cars, SUVs and vans etc, when trying to cross the road, which is where, statistically, the greatest danger lies.

Of course this will not 'solve' the congested parking issue at the school — that is not the object of the markings — and some vehicles will have to park further up or down the road during drop-off. (In fact it is argued by the Police that having a large number of cars on the roadsides near the school at drop-off and pick-up times actually has the effect of slowing down all traffic in that area.) But it is just the issue of small children darting out from between parked vehicles that is the danger we are trying to mitigate with these white 'H' lines.



Background Information

Many answers to the 'school parking problem' are regularly mentioned, such as pelican, zebra and 'lollipop' crossings, cones, double yellow lines, white zig-zags, other road markings, altering the local road layouts and even turning more of the green into a car park, etc.

Despite the best efforts of the school, the Parish Council and GCC Highways, these solutions cannot be implemented for various legal and other reasons; and the proposed white lines are the only reasonable way forward at the moment.