

Fastershire Stage 3 Gigaclear Community Event

27/01/21

Faster broadband for Herefordshire and Gloucestershire

www.fastershire.com

Agenda



- Welcome & Introductions
- FasterShire Background
- Gigaclear Introduction
- Plans for St. Briavels cabinet build area
- Other support
- Q&As

- Slides and Recordings available
- Use the Chat Box function to ask us a question
- May not be able to respond to individual queries or those relating to the go live dates for specific areas

Faster broadband for Herefordshire and Gloucestershire

www.fastershire.com



Fastershire Background



- Partnership - Herefordshire & Gloucestershire Councils (Established 2011)
- Conduit for Public funding to overcome the market's failure to provide **superfast** broadband
 - Monitor Market Failure
 - Raise Public Funding
 - Invest in Solutions
 - Comply with State Aid
 - Manage Suppliers
- Also focused on encouraging adoption & greater exploitation

fastercommunities *fasterbusiness* *fasterwomen* *fasterfarmers*

Faster broadband for Herefordshire and Gloucestershire

www.fastershire.com

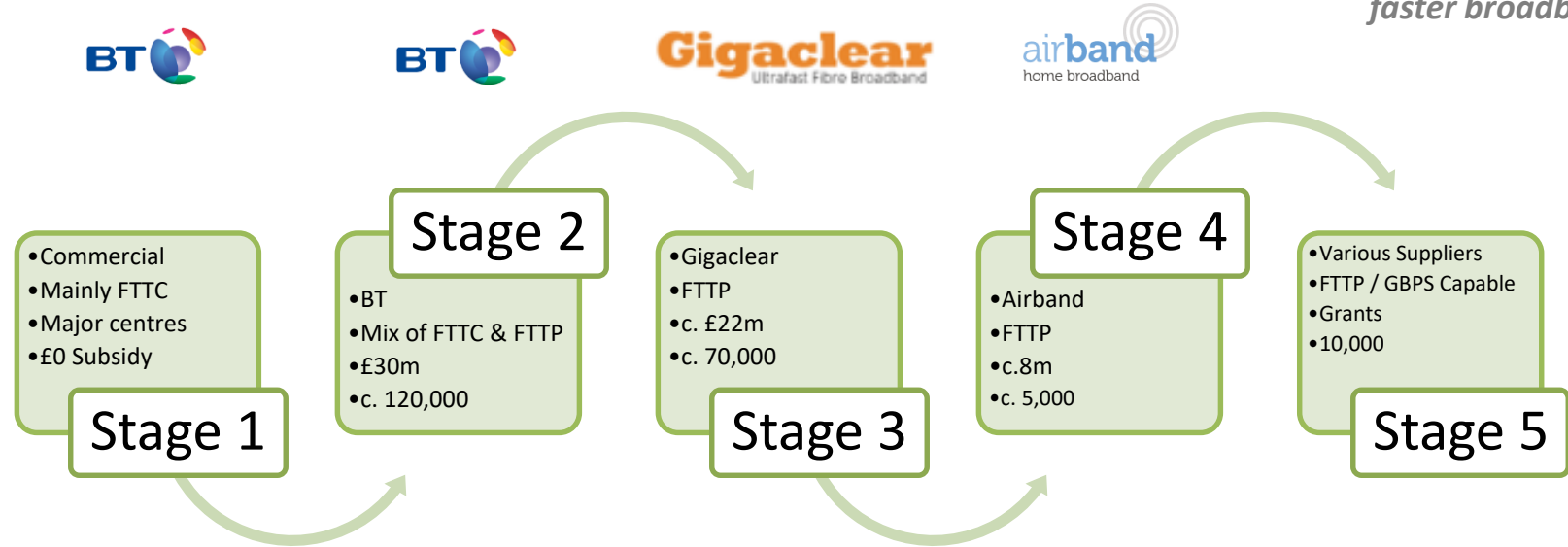


FasterShire Broadband Strategy



£70m + Public Subsidy

“all residents and businesses in Herefordshire and Gloucestershire will be able to order the broadband service they need and a high percentage will be using faster broadband to do more online, boost business growth and achieve their potential”



Faster broadband for Herefordshire and Gloucestershire www.fastershire.com



Gigaclear



- Fibre to the Premise (FTTP)
- Mostly Ducted Buried network (highly resilient)
- No active dependency on BT
- Increasing use of PIA where it can reduce the build timeframes or overcome barriers
- World leading broadband provision
- In targeting the hard to reach they will also pass those that already have access to superfast broadband e.g. Fibre to the Cabinet (FTTC)

Faster broadband for Herefordshire and Gloucestershire

www.fastershire.com



Gigaclear

- Highly invasive
- Dependencies on
 - Backhaul Light Path
 - 3rd Party Landowners
 - Power Company
 - Traffic Management

– make it susceptible to delays
- It will be disruptive but it will be worth it in the end



Faster broadband for Herefordshire and Gloucestershire

www.fastershire.com



St. Briavels

>30Mbps = 362

<30Mbps = 80

17.2Km of Fibre



CONNECTING COMMUNITIES

ST BRIAVELS

Ben Stone – Community Engagement
Manager

27th January 2021



ABOUT GIGACLEAR

WHAT WE DO

Founded in 2010, we've been working closely with rural communities across the country to bring ultrafast fibre broadband where it's most needed. Everything we do is focused on enhancing rural living through increased connectivity.

Gigaclear is principally owned by Infracapital, a leading European infrastructure investor.



HOW WE DO IT

We invest in rural communities

We build our networks with commercial investment and through the Building Digital UK (BDUK) scheme in partnership with local authorities.

We build and maintain the largest rural FTTP network

We plan, design and build the infrastructure necessary to bring full fibre broadband to the most rural communities.

We provide the UK's fastest broadband

Once built, we offer ultrafast broadband packages to residents and businesses so they can enjoy superior speeds – all day every day.

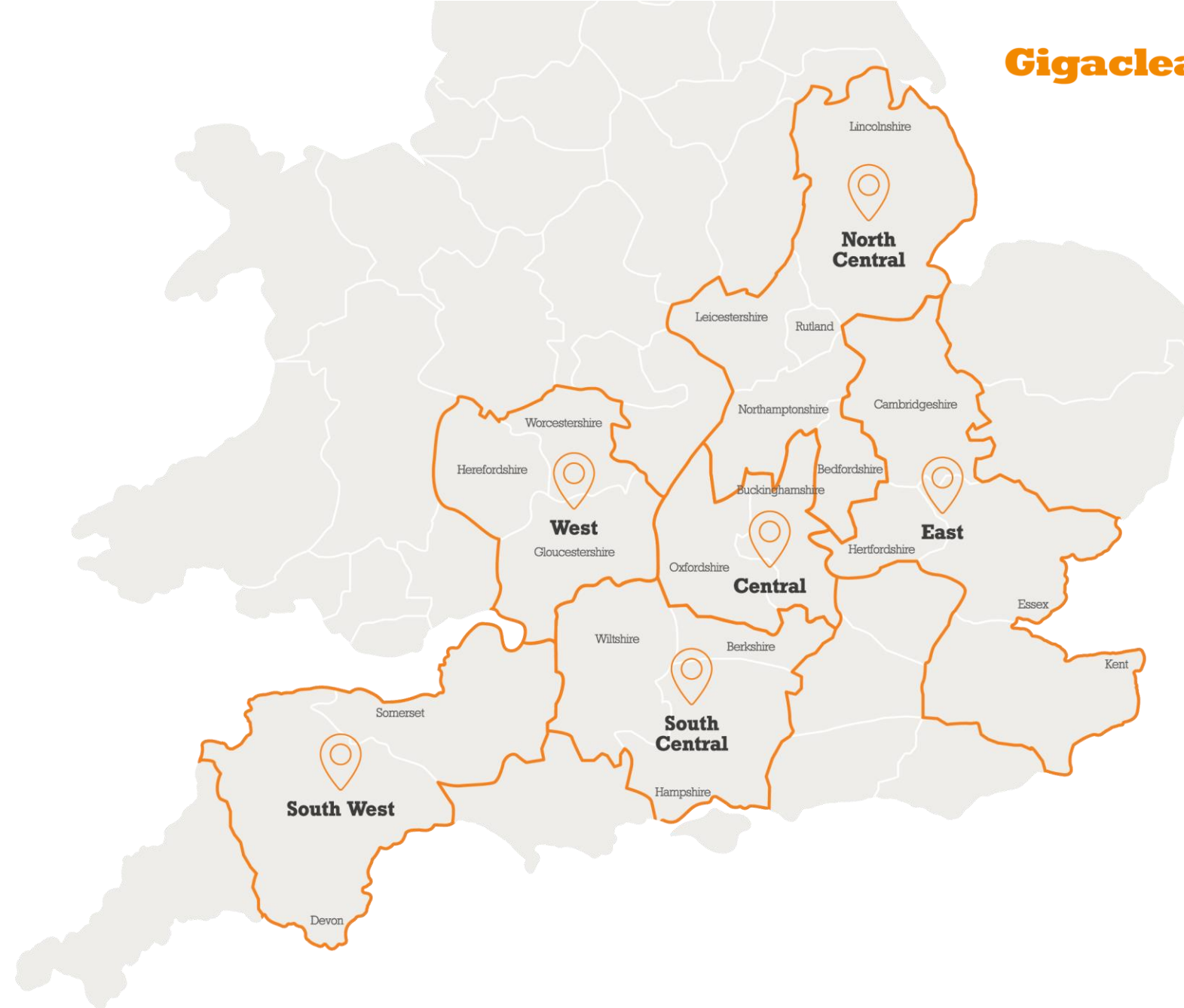
CURRENT COVERAGE AREA

300+

Communities now have
access to Gigaclear

30,000+

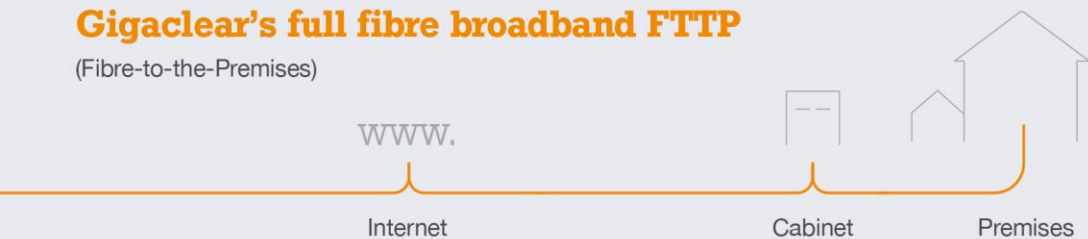
Customers and growing



WHY FTTP TECHNOLOGY

Gigaclear's full fibre broadband FTTP

(Fibre-to-the-Premises)



— Full Fibre

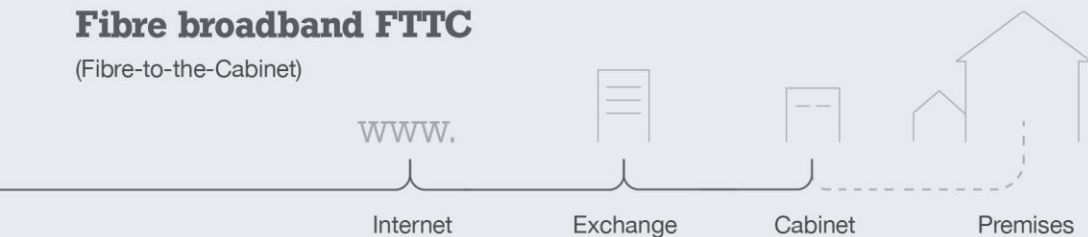
900 Mbps average download speed

900 Mbps average upload speed

VS

Fibre broadband FTTC

(Fibre-to-the-Cabinet)



— Fibre
- - - Copper wire

80 Mbps average download speed

20 Mbps average upload speed

Standard broadband ADSL

(Asymmetric Digital Subscriber Line)



24 Mbps average download speed

3.5 Mbps average upload speed



Capable of 'Ultrafast' speeds 1000Mbps (1 Gigabit)



Can transmit data over a long distance – perfect for this type of network



Reliable broadband signal. Ideal for running all your home wireless connectivity



Can handle multiple users with multiple devices



Ability to manage very high bandwidth devices with no buffering

WHAT THIS MEANS FOR YOU



FAMILIES

Get everyone online at the same time, without your internet connection grinding to a halt. No buffering when you stream music, movies or gaming and no competition over who gets to go online first.



HOME WORKERS

Build your own empire or simply enjoy a day working from the comfort of your own home with corporate-quality speed and reliability. Easy access to cloud services and video conferencing makes communicating remotely more reliable.



COMMUNITY SERVICE

Full fibre broadband delivers benefits to your whole community, including pubs, libraries, surgeries, clinics and particularly schools, minimising interruptions so online resources can be fully utilised.



LOCAL BUSINESSES

Your business is now on the same digital playing field as your biggest competition. Just being online gives you access to productivity tools and video conferencing to help uncover new opportunities, better serve your customers and contribute to your business development.



ONLINE SHOPPING & BANKING

Take advantage of the convenience of online shopping portals. Manage accounts, pay bills and transfer money online.



KEEP IN TOUCH

With ultrafast speeds you can utilise online messaging tools to video call friends and family. These services are free and easy to use and help keep people in touch in today's online world.

WHO CAN USE OUR NETWORK

We build fully open access networks meaning any Internet Service Provider (ISP) can sell over our network should they choose to. Giving businesses and homeowners quality of service and freedom of choice. The list of ISPs available on our network can be found at www.gigaclear.com



HOW WE BUILD YOUR NETWORK

Gigaclear®



THE BUILD JOURNEY

Below is an outline of the key stages involved in delivering ultrafast full fibre broadband to your community.

Stage 1
Planning



Stage 2
Design



Stage 4
Mobilisation



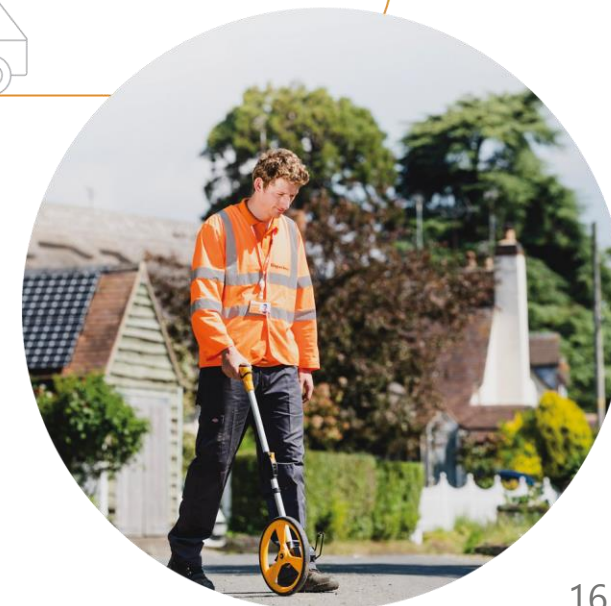
Stage 3
Validation



Stage 5
Build



Live!



BUILD

To install the network we physically lay the fibre cables, in ducting, in the ground – either in verges, roads or foot paths.

Where possible we try to use minimally invasive methods, such as narrow trenching.

During this part of the build process there may be road closures and possibly diversions in place to allow our teams to work safely.

We will notify you before works start by letter. Our contractors will notice road closures by letter, and with early warning signs.

one.network



NETWORK ACCESS AGREEMENTS

A Network Access Agreement is a consent that Gigaclear require to install and keep equipment on privately owned land.

We design our network using as much public land as possible, such as verges, footpaths and roads.

In some instances, the network design will need to cross privately owned land to connect the network. In this instance we write to request permission for such work to be carried out.

If you have received a Network Access Agreement, it is because we are requesting permission from you to install and maintain fibre optic equipment on land that you own.



TOOLS OF THE TRADE

Connection Pot (Flush)



Connection Pot 2



Access (Active) Cabinet



CDC Cabinet



Multi Ducting



Fibre Straw



Open Cabinet

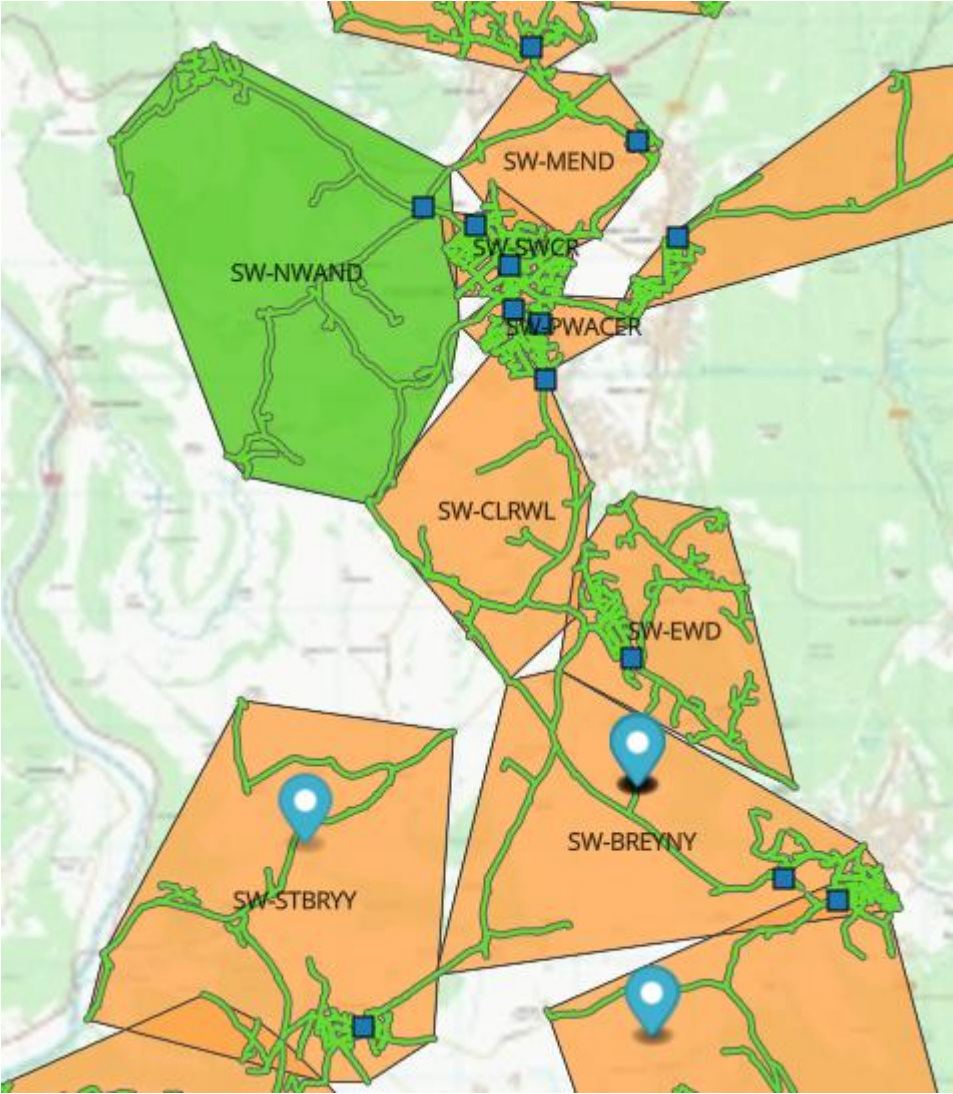


REINSTATEMENT

- We will reinstate all verges, pathways and roads within 6 months of completing the build.
- Reinstatement may be dependant on weather, materials, location and type of reinstatement required.
- Everything disrupted by our works will be reinstated to Highways Authorities and Utilities Committee Standards.



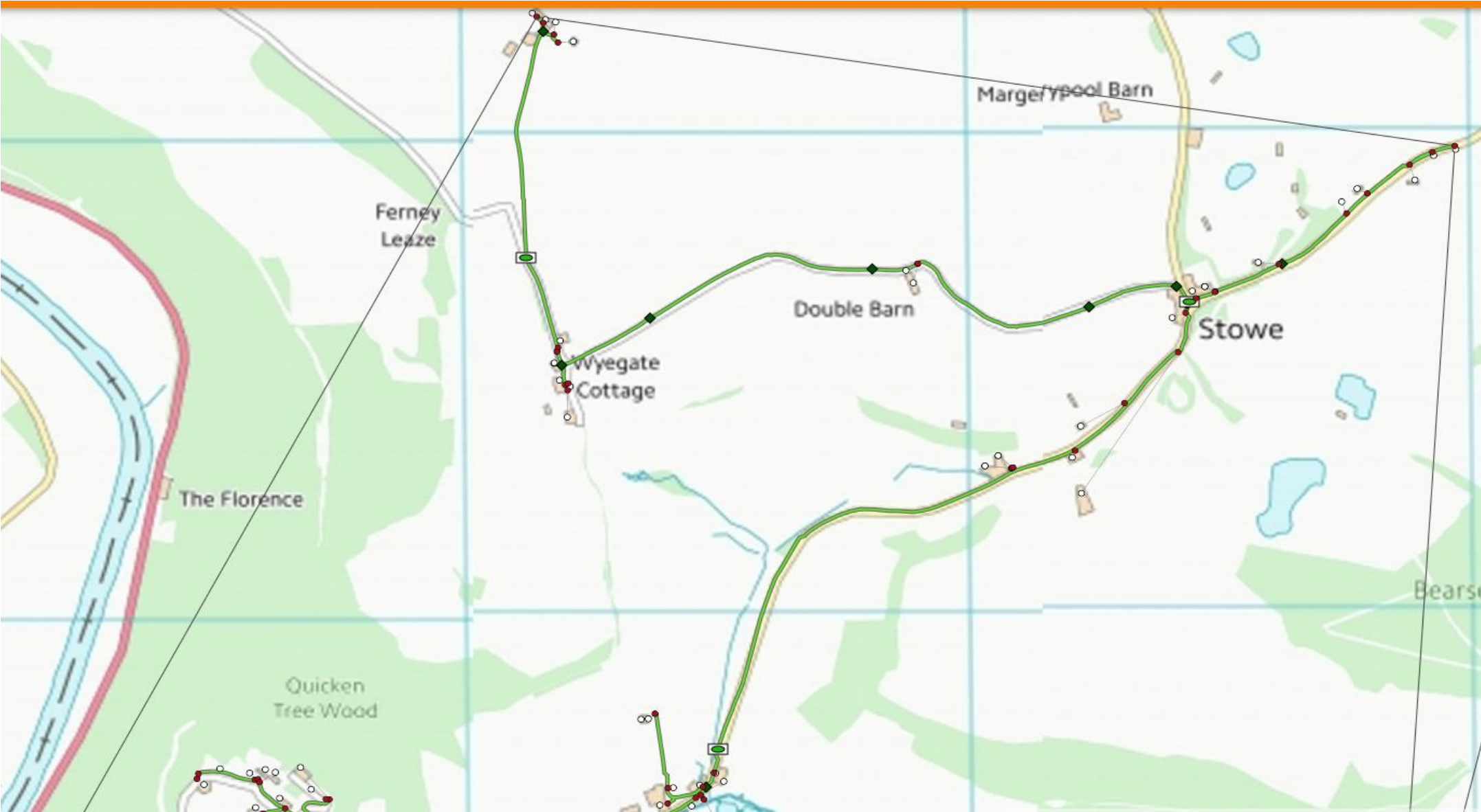
YOUR BUILD MAP: ST BRIAVELS



YOUR BUILD MAP: ST BRIAVELS



YOUR BUILD MAP: ST BRIAVELS



BUILD SUMMARY FOR ST BRIAVELS

- JUST UNDER 440 CONNECTION POTS IN THIS COMMUNITY AND 17239m TO DIG.
- THIS COMMUNITY IS BEING BUILT BY OUR CONTRACTOR O'CONNORS.
- YOU WILL BE RECEIVING LETTERS FROM US TO CONFIRM THAT THE BUILD WILL BE STARTING IN YOUR COMMUNITY IN Q2.
- WE FORECAST THIS BUILD STARTING IN Q2 – ONE.NETWORK WILL HAVE DETAILS OF THE TRAFFIC MANAGEMENT NOTICES WE WILL BE REQUIRING TO COMPLETE THE BUILD SAFELY.
- WE ANTICIPATE THAT ALL CONNECTION POTS IN THIS BUILD WILL BE READY FOR SERVICE BY Q2 2022.
- PLEASE REGISTER FOR BUILD UPDATES AT GIGACLEAR.COM AS WE WILL NOTIFY WHEN YOU WILL BE ABLE TO ORDER A SERVICE.
- WE ALWAYS OFFER ONE FREE CONNECTION TO EVERY COMMUNITY UNDER OUR COMMUNITY HUB SCHEME - www.gigaclear.com/community-hub

HELP AND SUPPORT



networkbuildcare@gigaclear.com



01865 591 137



gigaclear.com

READY
FOR SERVICE

Gigaclear®



READY FOR SERVICE

Once our network has been built and the external connection point at the boundary of each property is ready to be activated, residents and local businesses are ready for service.

Look out for a card from Fastershire which will confirm you are ready to go!

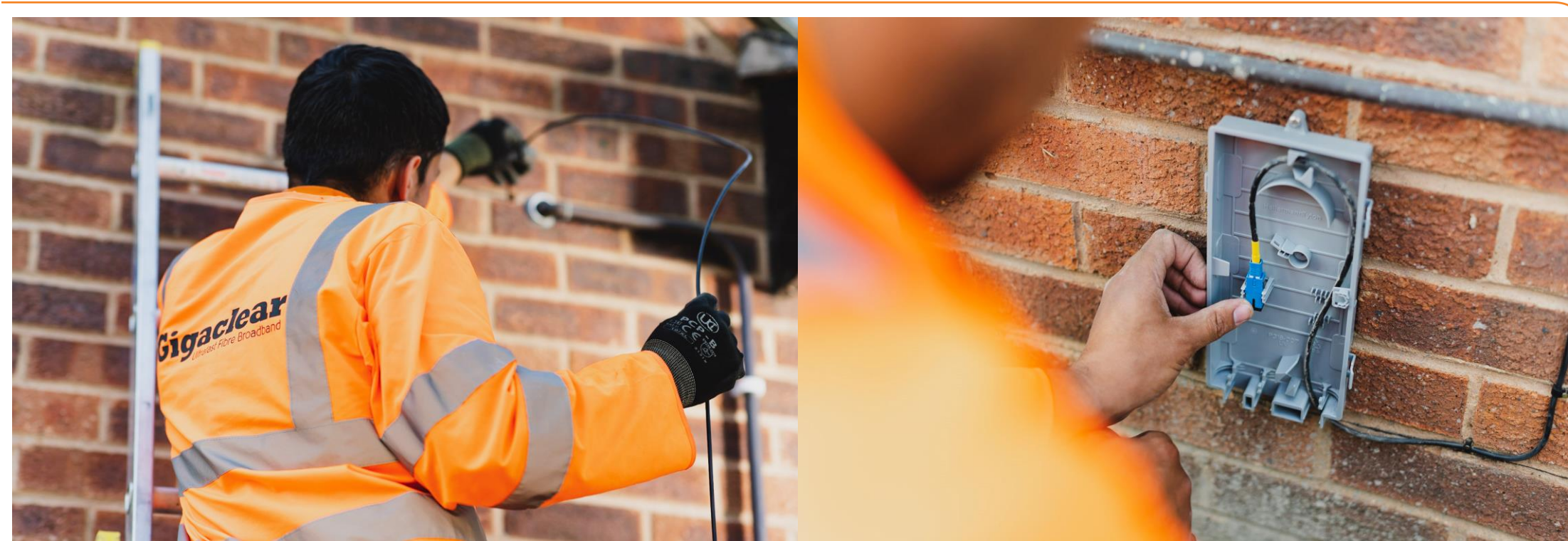
For the most up-to-date information on our broadband packages and available ISPs on our network, please go to gigaclear.com



INSTALLATIONS



INSTALLATIONS



WIFI



- Newly launched best ever Wifi solution: Gigaclear powered by Linksys
- Allows the flexibility for additional nodes to provide increased coverage and performance throughout your home
- Find out more at www.Gigaclear.com/home-broadband

FINAL POINTS

- BUILD IN THIS COMMUNITY TO COMMENCE IN Q2.
- TO CONFIRM THAT YOU'RE PROPERTY IS IN THE BUILD – GO TO THE FASTERSHIRE WEBSITE AND USE THE ADDRESS FINDER. (www.fastershire.com)
- PLEASE REGISTER FOR EMAIL UPDATES AT www.gigaclear.com
- WE ARE LOOKING FORWARD TO BRINGING ULTRAFast FULL FIBRE TO THE PREMISES BROADBAND TO ST BRIAVELS.
- THANK YOU FOR TAKING THE TIME TO ATTEND THIS SESSION.

How will people know?

Still have to physically order

- General Marketing
- Postcards upon RFS
- www.fastershire.com

welcome to
fastershire
Faster broadband for Herefordshire and Gloucestershire



LinkedIn

Faster broadband for Herefordshire and Gloucestershire

www.fastershire.com



Business Support Programme



FasterShire also includes an extensive business support programme designed to help small and medium size businesses across Herefordshire and Gloucestershire.

Faster Business

Free monthly training workshops.

Faster Business Review

Free consultancy session with one of our specialist advisors and is tailored to each business.

Faster Farmers

Free business support for farming, agricultural and land-based businesses in the Herefordshire and Gloucestershire.

www.fastershire.com/faster-business

Faster broadband for Herefordshire and Gloucestershire

www.fastershire.com



Thankyou



- Any Questions?

Faster broadband for Herefordshire and Gloucestershire

www.fastershire.com

